



Integrated Sports Systems (ISS) Inc.

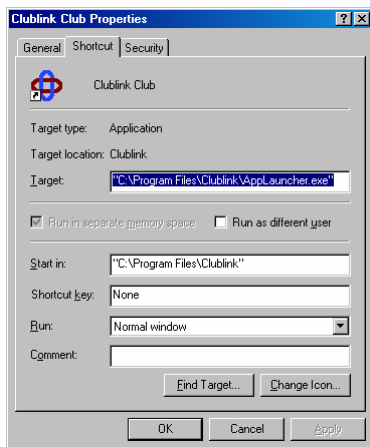
To Install Clublink on the network, do the following.

Installation

1. Install Clublink on all machines that will use Clublink (same version on all machines).
2. Open Clublink once on each machine and enter the serial number (CL?????) found on the CD.
3. Close Clublink
4. Create a shortcut to AppLauncher.exe on every user's machine to create a network shortcut to an installation of Clublink.
5. Delete the Clublink folder from each machine (except for the main machine).

How do you redirect the shortcut?

1. Right click on the Application Launcher icon on your computer
2. Select Properties
3. Change the Target and Start In paths to point to your networked installation of Clublink.



Sincerely,

Michael Morris
Clublink
mmorris@integratedsports.net