

Networking Clublink

With Clublink 6.0, networking has never been easier.

1. Successfully install a licensed version of Clublink on your server.
2. Share your data directory (consult your network administrator on sharing folders).
3. Install Clublink Workstation on any computer.
4. Set the data directory to the shared data directory on your server.

Setting the Data Directory

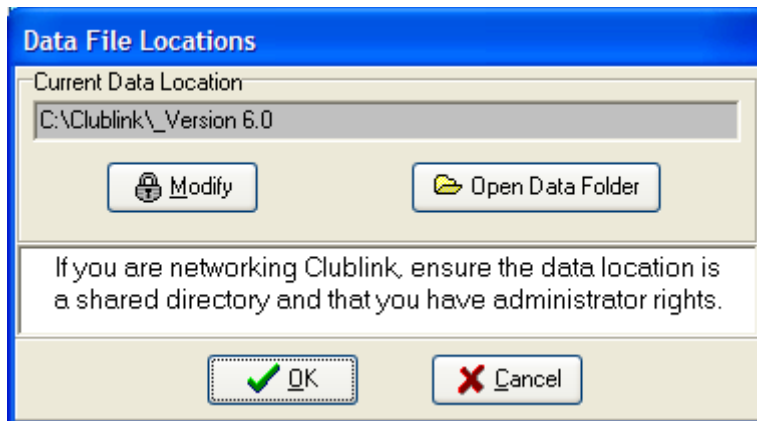
Clublink 6.0

Opening Screen

Options menu

Data File Locations menu

You can set and find the data directory from the *Data File Locations* menu.



Windows 7 and VISTA users: Careful about where you put your shared data. Consult your network administrator for Windows best practices.