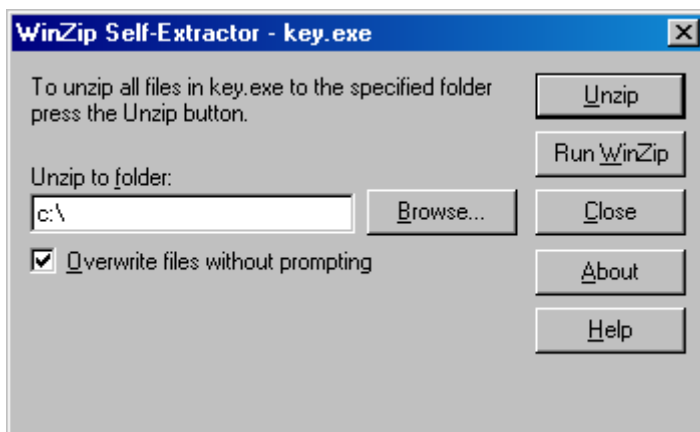
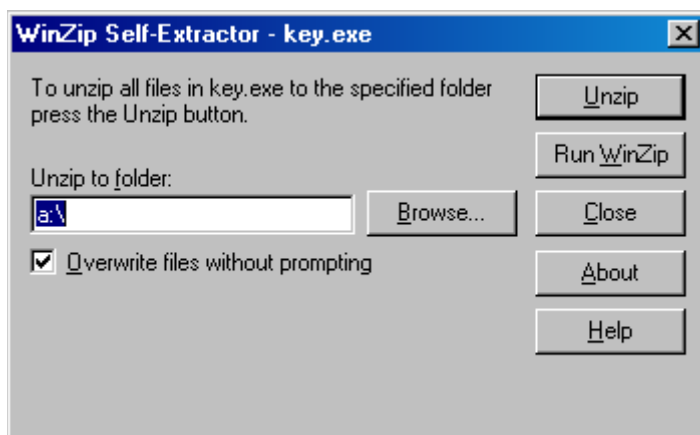


Clublink Key Installation

These instructions are designed for users that do not have a floppy disk drive on their computers.

1. Run file key.exe
2. Change the *unzip to folder* c:\ from a:\



3. Press Unzip
4. When asked for your Clublink installation key, select c: drive as the location
5. If you have a serial number, use it, otherwise contact us at info@integratedsports.net